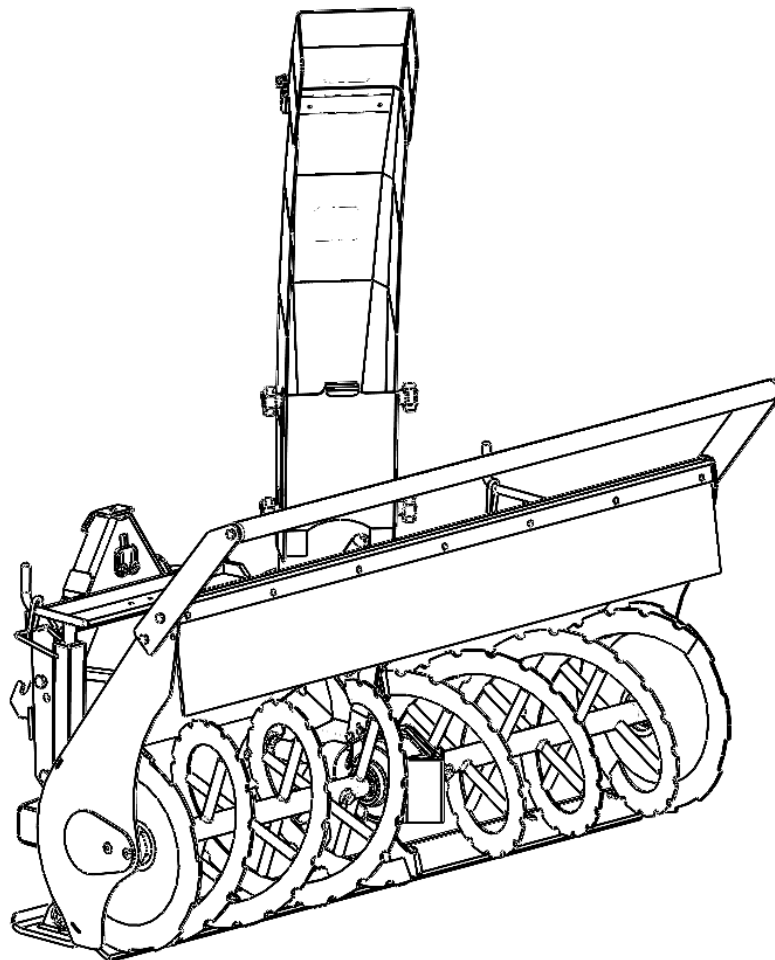
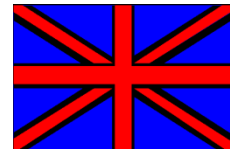




**USER AND MAINTENANCE MANUAL
HYDRAULIC SNOW BLOWER
TWO STAGE
BASIC HY series mod. L1400 SX**



Read this manual carefully before using the snow blower



CERRUTI S.R.L.

**VIA STATALE 27/H
14033 CASTELL'ALFERO AT
Tel.(+39)0141/296957 – Fax (+39)0141-276915
Tax and VAT Number 01295490054**

DECLARATION OF COMPLIANCE

CERRUTI S.R.L declares under its own responsibility that the machine:

**SNOW BLOWER
Model HY L1400
BASIC BS
SERIAL n°
Year**

complies with European Directive:

2006-42 CE

To ensure the machine's compliance, the following Harmonised Norms were used:

ISO 4254-1

as well as Technical Specification:

ISO 11684

**CASTELL'ALFERO
DATE**

**CERRUTI S.R.L.
Legal Representative
Roberto Cerruti**

Index

	page
Foreword	1
Manufacturer details	3
Product ID plate/CE marking	3
Uses	4
Description and operation of the tool.....	4
Technical data	6
General safety.....	7
Safety devices and protections.....	10
Safety plates and symbols	11
Lifting/manoeuvring	12
Assembly and connection to the operating machine.....	12
Instructions for use	14
Maintenance.....	15
- worms and transmission unit.....	17
- expulsion chutes	18
- hydraulic motor	18
End of use/Garaging	19
Disposal	20
Parts subject to wear and tear.....	21
Hydraulic system	22
Terms of general warranty	23

PICTOGRAM SYMBOLS USED IN THIS MANUAL



WARNING =

THIS SYMBOL INDICATES THAT IF OPERATIONS ARE NOT PERFORMED CORRECTLY, THEY MAY CAUSE SERIOUS HARM OR INJURY, DEATH OR HEALTH RISKS



CAUTION =

THIS SYMBOL REMINDS YOU TO OBSERVE THE MANUFACTURER'S INDICATIONS IN ORDER TO AVOID DAMAGE TO MACHINERY OR EQUIPMENT

Foreword

TERMS CONTAINED IN THIS MANUAL

The snow turbine described in this manual shall be hereafter known as “**EQUIPMENT**”
The machine with which the equipment is coupled shall be known as “**OPERATING MACHINE**”

The “**OPERATOR**” is the person who attaches, drives, transports and performs maintenance on the equipment.

By “**DANGEROUS AREA**” we intend the area in the vicinity of the equipment where risk to the exposed person’s safety is high.

By “**EXPOSED PERSON**” we intend the person who lies within the dangerous area.

By “**MACHINE**” we intend the assembly of operating machine and equipment.

Preface

Thank you for choosing our product.
Our Customer Assistance and Sales Network are available to you for any information you may require.

This manual provides you with all the information you require for the use and maintenance of your snow blower. The good function and duration of your snow blower depend on a good level of maintenance and caution during use.

Before leaving the production site, this specific model was subjected to strict testing procedures to ensure its reliability and safety; however, you will need to check whether the machine has been damaged during transportation as this could compromise its function and safety.

The technical information contained in this manual is the property of **CERRUTI** and must be considered confidential.
Reproduction, even partial, of the content and illustrations is prohibited by law.

Some features depicted in the illustrations in this manual may be different to the features of your snow blower. Some components may have been removed to guarantee clarity in the illustrations.

The information and technical data contained within this manual have been provided by the manufacturer during production. The manufacturer reserves the right to make any changes to this manual at any time without notice.

If you have any doubts, do not interpret the information. Instead, contact **CERRUTI** immediately.

The Spare Parts Assistance Team provides original parts for the snow blower. The Technical Assistance Team is the only team authorised to intervene on the product during the warranty period, supported by the external authorised network.

By using original spare parts you are ensuring that your snow blower remains unaltered over time and that you are covered by the **PRODUCT WARRANTY** throughout the warranty period.

Warning!



Read this manual before using the snow blower.



TECHNICAL ASSISTANCE
Please contact our resellers for any problems
or queries you may have

Manufacturer Identification Details

Manufacturer: CERRUTI S.R.L.
Address: Via Statale, 27/H – 14033 Castell'Alfero (AT) Italy
Telephone: +39 0141 296957
Fax: +39 0141 276915
E-mail: info@cerrutimacchineagricole.it

Machine Identification Plate/CE Marking

The machine model, the frame serial number and other identification and technical details are reported on the riveted metal identification plate located on the upper part of the body shell.

To order any spare parts or accessories, please record the details listed on the identification plate.



CERRUTI
Via Statale 27 h-14033 Castell'Alfero (AT)
Tel 0141296957 -Fax 0141276915
www.cerrutimacchineagricole.it

○ MASSA (Kg) **CE** 2011 ○

SERIE

MODEL

N° MAT

MADE IN ITALY

We advise you to write down the numbers printed on the equipment's plate and to insert them in the appropriate spaces on this page.

Caution !



In the event of deterioration or loss of your identification plate, you will need to request a replacement from the Manufacturer citing the purchase details.

Uses

- The **BASIC HY** snow turbine is a tool for application to an operating machine with the characteristics indicated on page 6, for the clearance of snow from roads, streets, pavements, squares, industrial areas, etc.

It removes almost any kind of snow, as long as it is not too heavy (wet) or frozen. The speed of the tool depends on the type and depth of the snow.

Use other than that specified is considered to be IMPROPER.

Warning!



As the tool is used in conjunction with an operating machine, the operator is required to read the instruction and maintenance manual of the tool and also that of the operating machine.

The operating machine must have the characteristics shown on page 6

Description and operation of the tool

-The snow turbine, driven by the operating machine via the hitch plate (see point **7 – page 5**) works on the snow by virtue of the drive and the motion transmitted by the hydraulic motor (**6**).

-It consists of a structure (body **1**) in which the main working parts are the worms (**13**) and the rotor (**16**) contained in the conveyor (**8**)

The worms are divided into two parts: a half worm on the right, with the spiral turning towards the right, and a half worm on the left, with the spiral turning towards the left.

With the advancement and the rotary motion of the worms, the snow is channelled towards the centre of the machine and pushed inside the conveyor.

The **800/1000 rpm** rotor expels the snow outside, directed by the chute (**2**) into the desired position and/or in such a way as to ensure that it is never dangerous for people or things.

The rotary movement of the worms and the rotor is transmitted by the hydraulic motor of the tool (**6**). It is **important** to respect the number of revs indicated by the supplier. A lower number of revs will cause the snow clearance turbine to malfunction and a higher number will make it **dangerous**. The rev numbers are indicated on page 6.

The tool has a system to regulation the working height which uses lateral skates (**9**) to take the worms as close as possible to the ground in the presence of an even, compact surface without bumps or steps and without gravel, stones or other obstacles).

Description of the tool

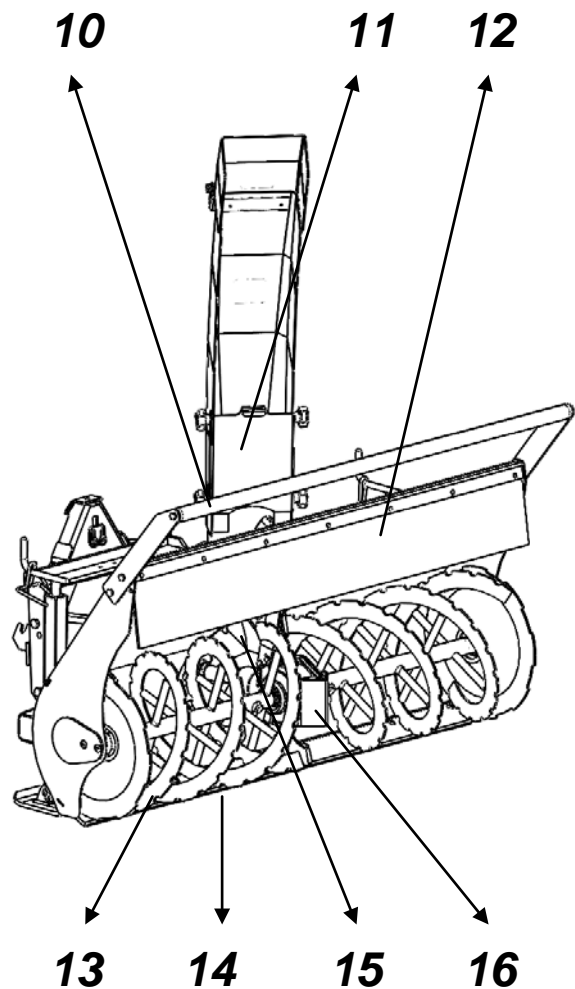
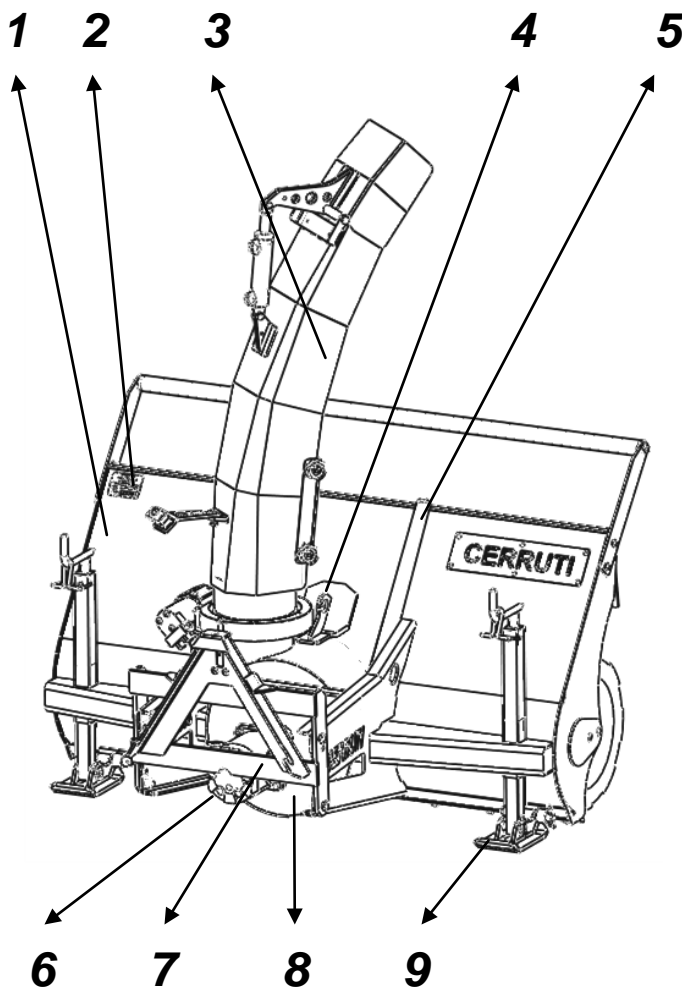
Warning!



Observe the number of revs supplied by the manufacturer to avoid dysfunctions of the tool or excessive vibrations.

- 1- Body
- 2- Machine identity plate
- 3- Snow expulsion chute
- 4- Lifting hook
- 5- Accessory to remove blockages
- 6- Hydraulic motor
- 7- Hitch plate for connection to the vehicle
- 8- Conveyer
- 9- Adjustable skates

- 10- Spacer barrier
- 11- Chute safety guard
- 12- Front guard
- 13 – Ice breaker worm
- 14 – Lower blade
- 15 – Blade rotor
- 16 – Central transmission unit





Technical data

L1400 Sx

- Working width **1400 mm**
 - Working height **650 mm**
 - Front worm diameter **395 mm**
 - Rotor diameter **400 mm**
 - Approx. mass with hitch plate **240 Kg**
- Hydraulic motor with gears - GR3-71cc
Maximum working pressure 200 Bar –peak pressure 215 Bar.
Number of hydraulic motor revs at full speed 900/1000 rpm
- Expulsion chute with hydraulically controlled regulation of rotation and inclination.
 - Rotation with mechanical lock and 200° opening (-100°/+100°)
 - Oil capacity required for regulation of chute min. 10 litres/min. – max 25 litres/min.
 - Oil pressure required for regulation of chute - 40 bar.
 - Replaceable lower blade made of steel.

Note

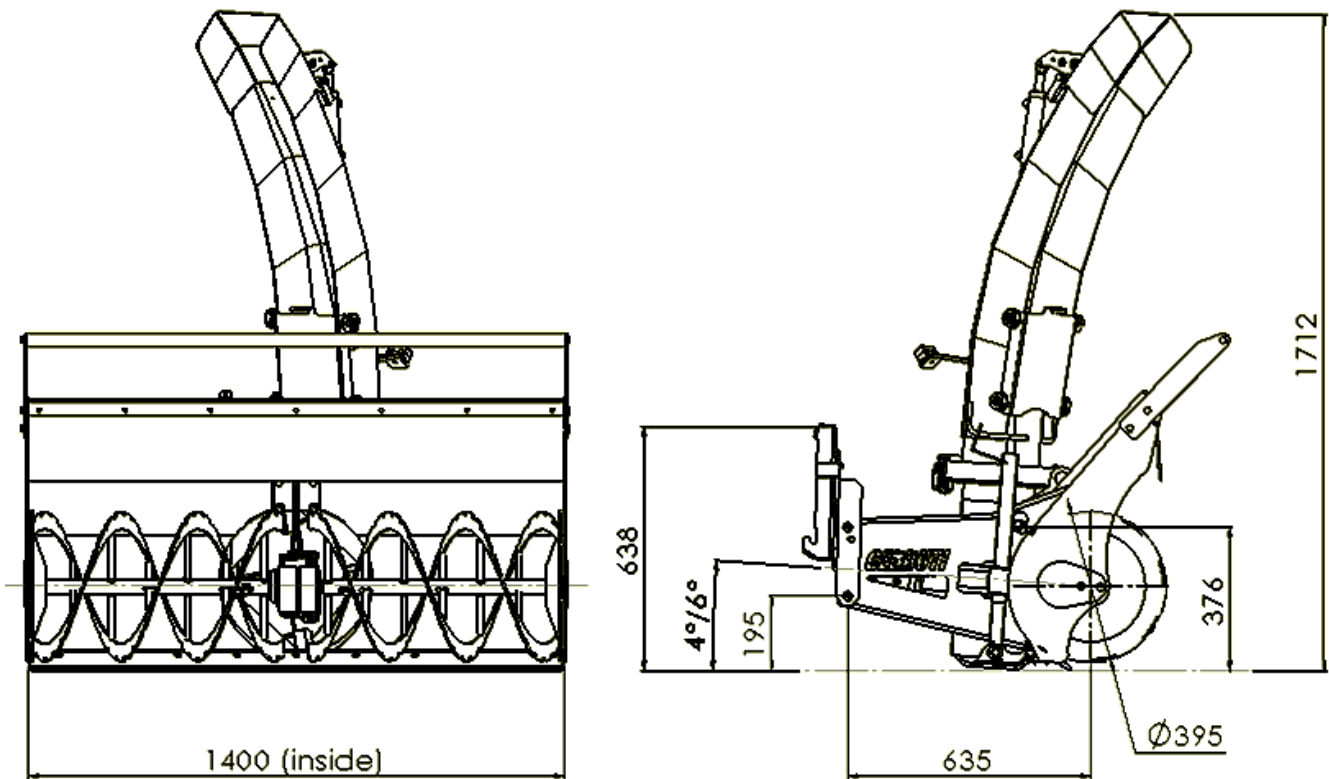
The weights indicated above are a guide only and may change depending on the applications required and specific modifications.

The hydraulic motor is supplied in the “size” required for the type and performance of the hydraulic system of the operating machine.

THE OPERATING MACHINE MUST HAVE THE FOLLOWING REQUISITES

Type of operating machine	HAKO CITYMASTER 1600
Min/max oil capacity	70-75 litres/minute
Min/max pressure	180-200 Bar
Quick hitch triangle plate class	0
G3/4 hydraulic connections for turbine	A17-d30 MALE
G1/2 hydraulic connections for turbine	A13-d24.5 FEMALE
G3/8 hydraulic connection for drainage	A13-d24.5 MALE
G1/4 hydraulic connection for chute	(A) A7-d16.1 MALE
G1/4 hydraulic connection for chute	(B) A7-d16.1 MALE

Description of models/technical data



General Safety Regulations

Failure to observe the basic safety regulations or precautions could lead to accidents during use, maintenance or repair of the snow blower. Accidents can often be avoided by recognising potentially dangerous situations before they happen. As the operator, you must be aware of potential dangers and have sufficient training, knowledge and equipment to perform these tasks correctly.

CERRUTI cannot be held responsible for accidents or damage caused by inadequately trained staff using the machine or staff misusing the machine as well as any inobservance, even partial, of the safety regulations and intervention procedures outlined in this manual. Safety precautions and warnings are indicated in this manual and are attached to the product itself.

If you do not pay attention to these danger messages, you may cause accidents with serious consequences to yourself and other people.

Warning!



Inobservance of these messages could cause you harm or injury.

General Safety Regulations

CERRUTI cannot foresee all possible circumstances which may pose potential danger. The indications given below cannot fully protect you from all dangers that could arise from the use of this machine; they must be integrated with common sense and your experience which are the sole essential measures for preventing injuries.

Given that the snow blower is connected to another mechanical vehicle, you must read the user and maintenance manual of the equipment and the vehicle itself in their entirety.

If any procedures or working techniques are used which are not explicitly advised by **CERRUTI**, you must ensure that there are no dangers to yourself and others and that these procedures are performed under your sole responsibility.

Common sense and prudence are essential to avoid accidents.

Please read the following general safety regulations carefully.

Failure to observe the regulations below frees CERRUTI from all and every responsibility.

Structural damage, modifications, alterations or improper repairs can change the protection and safety capacity of the machine.

First and foremost, as the operator, you must learn how to quickly turn off the engine, become familiar with the controls and learn how to use the machine correctly.

Do not allow children or inexperienced people to use the machine. Avoid using the machine in proximity to people, especially children or animals. Bear in mind that the user of the machine is responsible for damage or injury caused to other people or their property.

You must use the appropriate individual protection devices (**P.P.E**) such as shoes, glasses, gloves and earmuffs in using the machine and during maintenance operations.



Use adequate clothing and avoid wearing clothing that could catch on moving parts of the machine. Carry out checks on the equipment and the vehicle each time before using the machine. All safety devices must be present and placed in their correct position.

Respect road circulation regulations.

Do not transport objects or people on the machine except for standard equipment and approved items.

Do not tamper with any part of the equipment. Always keep the machine in a perfect condition and if any problem of any kind should arise, contact our Assistance Centres immediately.

No-one should approach the TURBINE until the machine has been switched off. Never touch parts in motion.

Before using the turbine, you must have good knowledge of all the devices, controls and functions.

If the machine vibrates in a strange way, immediately identify the cause and fix it. Never continue.

General Safety Regulations

Regularly check the tightness of the screws and auger support nuts.

Before attaching the quick release coupling to the vehicle distributor, ensure that the transport circuits and the turbine are not under pressure.

Ensure that the quick release couplings are locked in their respective places.

Before every use of the turbine, check that there are no cuts or abrasions on the hydraulic tubes and if there are, replace them with others provided by the manufacturer.

Sign off each quick release coupling to avoid attachment errors because they cause an inversion of movement.

Liquids under pressure, especially the oil of a hydraulic circuit, can cause serious injury and infections. In the event of an accident, see your doctor.

Before performing interventions on the hydraulic system, turn off the vehicle engine and release pressure from the circuit.

Warning!



High pressure hydraulic circuit. Release the pressure of the system before performing any intervention.

Warning!



Do not leave the machine unattended with the vehicle engine switched on.

Do not carry out maintenance, repairs, or interventions of any kind on the machine or on the equipment connected before the machine has been stabilised and the engine is switched off.

Warning!



Warning. The snow discharged from the chute at high speed could contain small stones or other small or medium size materials which could hit the operator, people or objects nearby.

- Snow discharged from the chute must be directed by the operator using the various adjustments towards non-dangerous places. The minimum safety distance for people and animals is 50 metres from the machine.

General Safety Regulations

Warning!

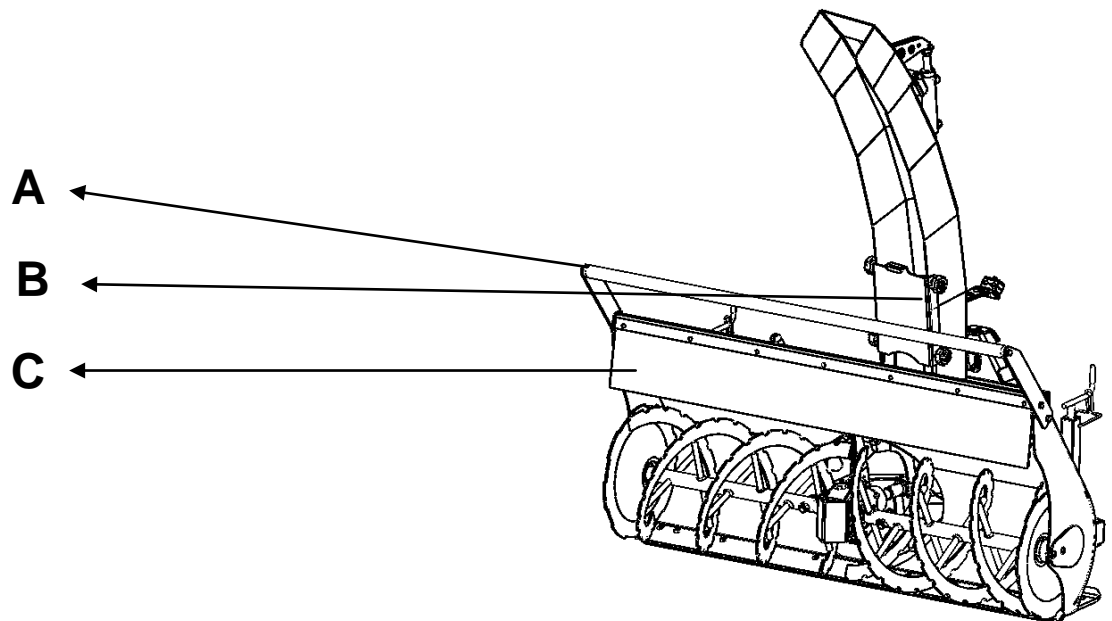


The operator must have suitable knowledge of the working area to avoid hitting or collecting objects which are dangerous or could injure people, or damage objects or the machine itself.

If you do not have sufficient knowledge of the area, suspend the operation or proceed with maximum caution. Use the equipment only in good conditions of visibility.

Safety and Protection Devices

The snow blower is equipped with safety devices which aim to eliminate the majority of risks related to normal conditions of use. We recommend that you always adhere to current safety regulations including the use of individual protection devices. (D.P.I)



A - Protective casing and spacer barrier/working zone barrier.

B - Protective grille from access to the conveyor impeller.

- The operator must wait for the machine to come to a complete stop before approaching the machine.

C - Front protection guard in the event of any stone throwback which, due to the rotation of the augers, can be projected across a dangerous trajectory for people or objects nearby.

Safety Plates and Symbols

Plates with safety symbols and/or messages of the various dangers that could arise during use are attached to the snow blower.

Warning!



Ensure that all safety messages are legible.

Clean them using a sponge, water and soap. Do not use solvents, oil or petrol. Replace damaged plates by requesting new ones from the manufacturer. If the plate is located on a part which is replaced, ensure that the new part has a new plate.

1



Read carefully the owner's manual for the use and maintenance before operating this machine.

Danger of dragging!

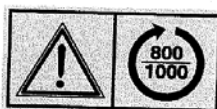
Danger of injuring superior limbs!

Keep away while the engine is running and wait for it to stop completely.

Danger of injury because of thrown objects!
Keep the safety distance from the machine while operating

Danger of injuring inferior limbs!
Keep the safety distance from the machine while operating

2



-Observe the directions of rotation and the number of revolutions shown

3



-Identification of the lubrication point

4

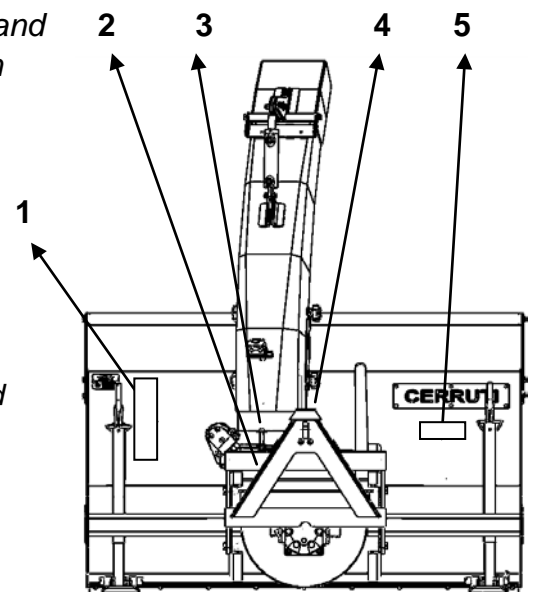


-Connection point for lifting the equipment. Use suitable means and regulation accessories.

5



-mandatory use of personal equipment (P.P.E.)



Lifting/manoeuvring

When lifting the tool, use the specific eyelet so that the tool is properly balanced.
The weight of the tool is stated on machine data plate (A)

Warning!



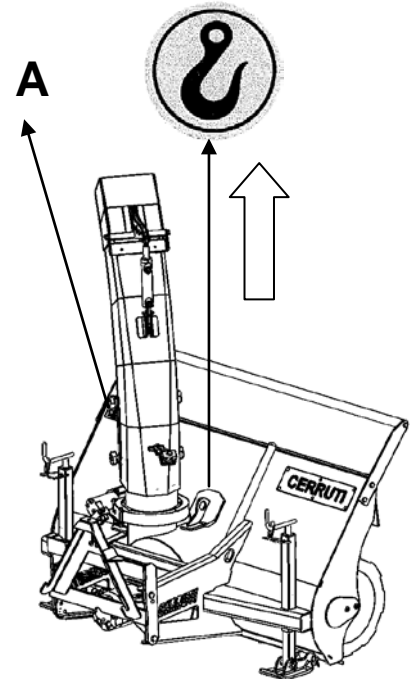
The ropes must not touch the snow expulsion chute during the lifting phase.

During the manoeuvring phases, the operator must ensure that the necessary safety conditions exist to guaranteed his safety and that of the other operators.

Caution!



Use equipment compliant with standards and lifting tackle that is in good condition and with a suitable capacity to move the tool.

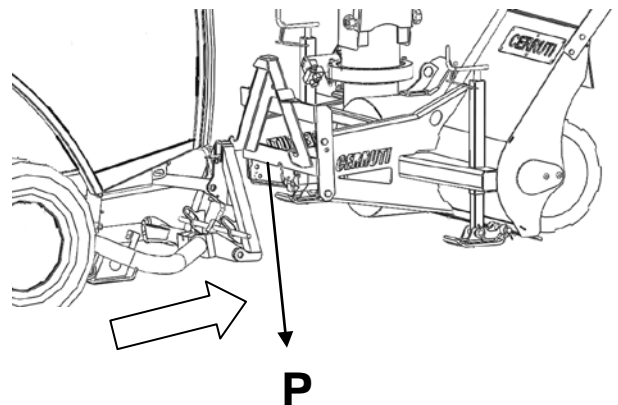


Assembly/disassembly and connection

The operating machine-tool connection system is of the quick hitch type with a triangular fastening plate and hydraulic/electric sockets.
When carrying out the lifting manoeuvres, follow the instructions of the operating machine.

Assembly

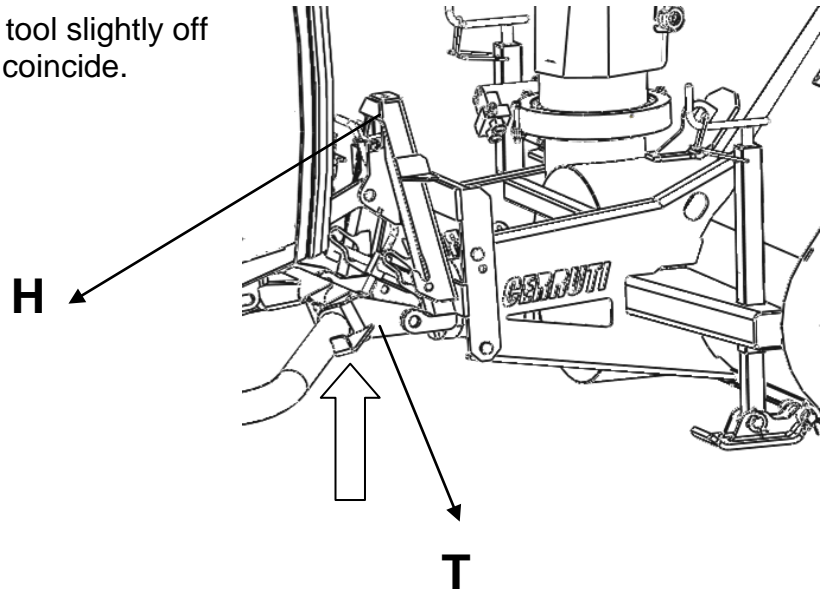
- Approach the plate of the tool (P) slowly with the operating machine until the two surfaces come into contact.



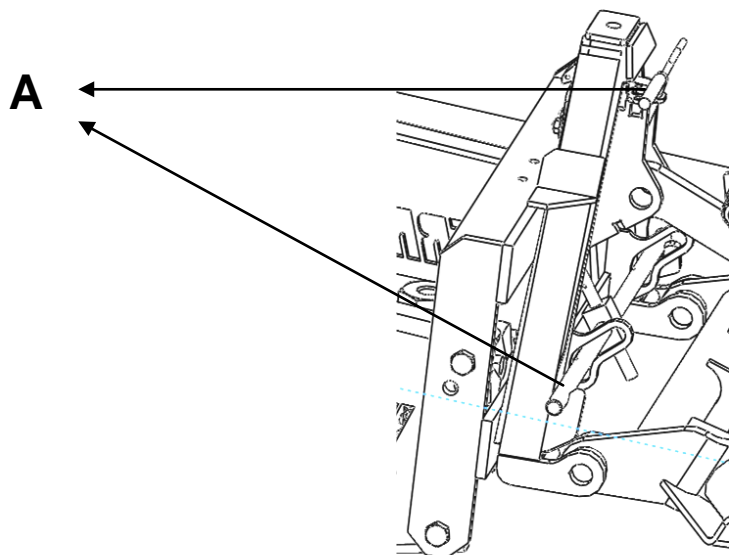
Assembly/disassembly and connection

- Lift the chassis (T) of the operating machine using the lift controls until the top part (H) of the plate engages.

Ensure that it is engaged, then lift the tool slightly off the ground so that the hitching plates coincide.



- Stop the operating machine and make sure that the tool is locked in place with the relative device (A) on the operating machine hitch. (See the operating machine instruction manual)

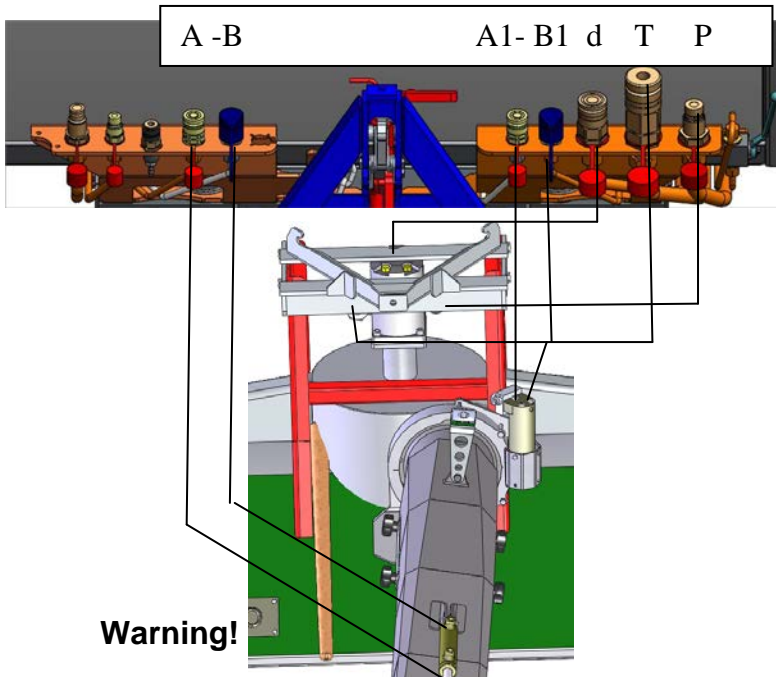


Connection

Connect the snow turbine hydraulically to the quick hitches on the machine. Take care not to invert the connections. Plug the electrical plug into the appropriate socket.

Assembly/disassembly and connection

Connection



A-B	chute control power supply
A1-B1	chute control power supply
P	turbine power supply
T	turbine delivery
d	drain

Warning!



For correct use of the auxiliary line activation controls, follow the instructions in the operating machine instruction and maintenance booklet.

Disassembly

- Disconnect the hoses from the quick hitches and the electrical plug on the operating machine.
- Place the tool in a stable and safe position.
- Release the lock of the device situated on the hitch.
- Lower the chassis using the lift controls and slowly reverse the operating machine.

Use regulations

Once we have reached the area where we intend to use the snow turbine, we must make sure that there are no obstacles hidden under the snow; otherwise we must remove any obstacles to avoid damaging the equipment. Assess the field of activity in the work area making sure that there are no people or animals with a **50 m** radius around the machine.

- Adjust the working height by operating the side slides according to the type of terrain we have to clear. On unpaved roads, keep the equipment a few centimetres above the ground in order for the forward facing feeding screws to avoid collecting gravel or other material.
- Activate the operating machine's hydraulic circuit and start forward at about 80% power. It is advisable to perform this sequence while the equipment is lifted or in areas free from snow so as to begin clearing in a gradual manner. Gradually increase rpm until max power.

Use regulations

Always check direction and angle of ejecting snow so as to avoid people or things. The rotation of the hydraulic vent is limited by a mechanical lock; be careful to not insist with the hydraulic control if the vent is not rotating.

Rotation must always occur under maximum safety conditions and must never be aimed towards points or places which may be dangerous for people or things.

In order to achieve the maximum results from the turbine, lower the machine's speed in accordance with the snow's height and compactness so as to allow for maximum allowed rpm of the impeller. In order to avoid overloading we suggest that you do not arrest the turbine's rotation in the middle of a clearing pass, but only at the end of the pass, so that the forward-facing feeding crews and the impeller may expel all the snow from the vent.

If the snow is particularly heavy or damp, and if possible, rotate the ejection vent along the direction of the flywheel and reduce the angle of the deflector to its lowest setting, so that the exiting snow doesn't find any variations and bottlenecks along its path.

Snow can be optimally cleared when its consistency is 80-140 Kg/m³ (fresh snow) or when it is compact but slightly frozen (crystalline).

End of Work

Stop the vehicle and disengage the hydraulic system rotation when the chute is fully free if possible.

Warning!



The vehicle's actions on the road, its steering and its braking capacity are influenced by the equipment on board.

Maintenance

Warning!



These operations can be dangerous for personal safety. Please proceed with care and attention, respecting all safety regulations.

Before starting any maintenance or cleaning operation, use the Individual Protection Devices (P.P.E.) such as gloves, anti-injury shoes, glasses etc for the job you are doing.



Maintenance

Before starting any maintenance operation, turn off the snow blower's engine.

Attach a sign to the controls stating:

MACHINE UNDER MAINTENANCE - DO NOT START ENGINE

Before starting any maintenance operation:

- Ensure that the engine is switched off.
- Carefully read all the regulations contained in this manual.
- Respect all the safety labels on the equipment.
- Do not allow unauthorised people to repair or perform maintenance operations on the machine.
- To use compressed air for cleaning, protect yourself with the specific glasses.
- The maintenance area must be kept clean.
- Do not lubricate, repair or adjust the machine with the engine running.
- Never use your bare hands to check for any loss of fluids; this could damage or injure your skin.

Caution !



**Do not disperse old oil or residual grease into the environment.
Old oil must be collected and handed over to the Old Oil
Consortium using the Authorised Companies.**

Always use equipment in perfect condition and specifically created for the operation at hand. Use of unsuitable and inefficient equipment increases the risk of serious injury.

Warning!



Perform all maintenance operations with the machine stationary and on the ground and connected to the vehicle with the engine turned off.

The following are ordinary maintenance and control activities which are required to ensure the equipment's normal operation.

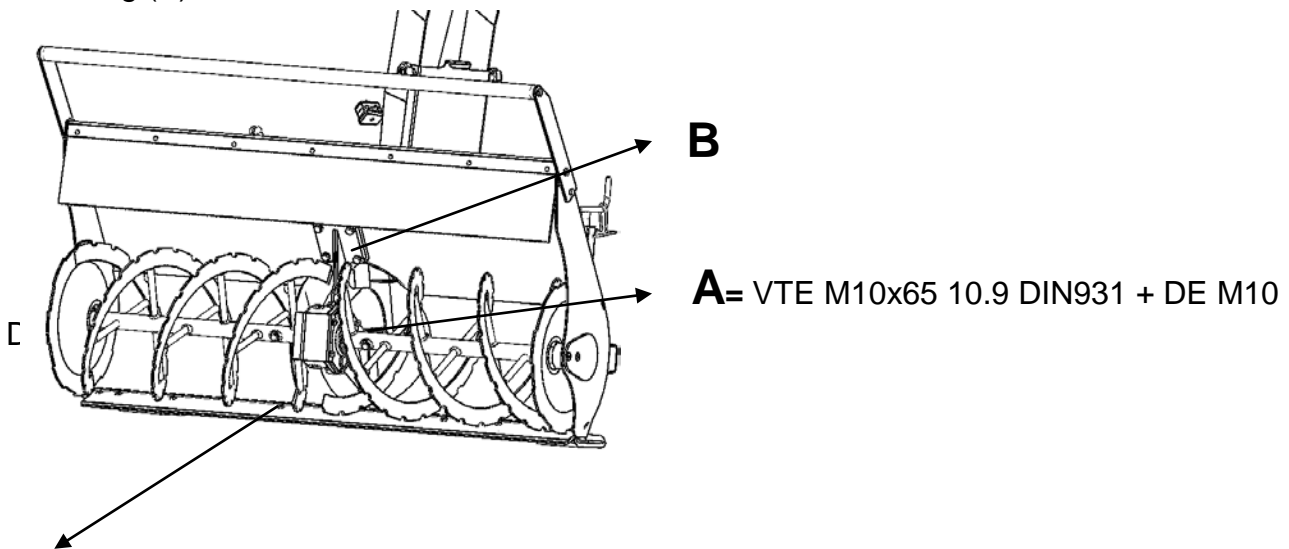
Extraordinary maintenance must be performed exclusively by the technicians of the manufacturing company. **Follow planned maintenance and inspection procedures during the entire life-cycle of the equipment in relation to its frequency in usage.**

If torque wrenches or other special tools are used, please verify that their calibration is suited to the component. Do not forget rags, wrenches or tools needed for maintenance inside the machine.

Maintenance

Feeding screws and transfer case

After finishing work it is important to remove all snow from the turbine with the included wooden stick, check if all screws securing the wear blade (D) and the transfer case mounting (B) are secured.



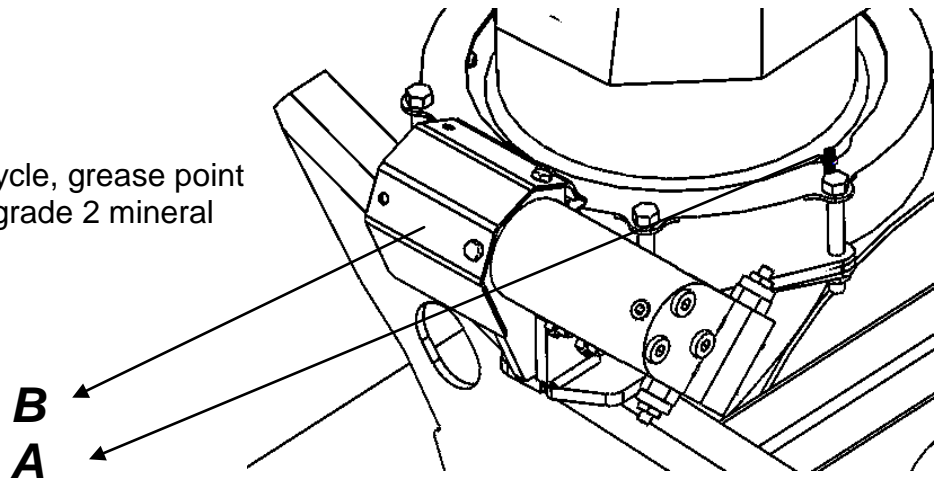
D= VSP M8x25 DIN7991 +DE M8 DIN982

Check that feeding screws and impeller are free to rotate; if they are not, check the integrity of the ball bearings and side supports (C). If during use we become aware that we caught a stone or something similar, verify that the feeding screws and the impeller have not been deformed; if that is the case it is necessary to replace the damaged parts in order to avoid imbalances and harmful vibrations for the machine itself. The transfer case does not require maintenance, however check periodically for oil leaks; should there be any oil leaks contact customer care. The feeding screws are equipped with safety screws (A). In order to avoid transporting medium or large sized material which may damage the equipment, the safety screws are designed to break beyond a certain load. We advise you to always have a few spare suitably sized screws on hand.

Maintenance

Expulsion chute

At the end of every work cycle, grease point on the thrust bearing with grade 2 mineral grease.



Spread the grease on the endless screw inside the safety barrier (B).

If the neck of the chute should become blocked, proceed as follows:

- Turn the chute towards the side.
- Turn off the machine motor.
- Remove the snow inside the chute using the special accessory supplied.
- Put the accessory back in place and slowly restart the turbine.

Warning!



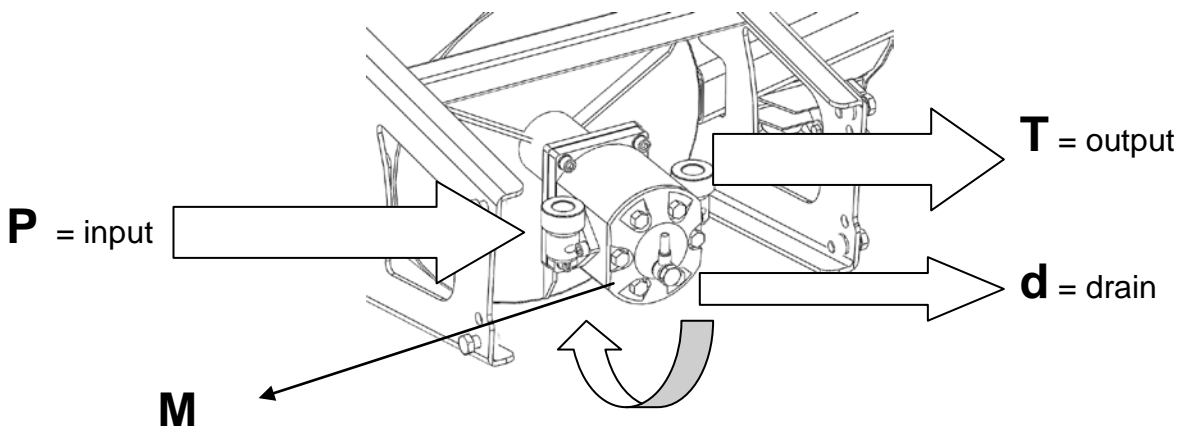
The chute is fitted with a mechanical lock to limit its rotation. Do not force the controls when the chute is at the end of its stroke, inverting the direction of rotation if necessary.

Hydraulic engine

The hydraulic motor (M) has gears, making it necessary to pay attention that, when engaging the quick hitches of the pipes, they are thoroughly clean and uncontaminated. The motor must be full of oil before starting rotation.

The maximum oil temperature during operation must not exceed 80°C.

The motor works best when the viscosity of the oil is between 3°E and 10°E. The higher the viscosity the better the performance.



Maintenance

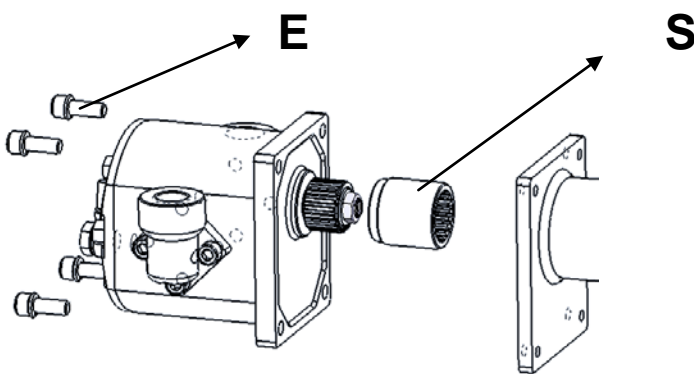
It is essential to equip the hydraulic system with a suitable filtration device, safety systems with reliable instruments and suitable systems to avoid turbulences in the fluid.

Before starting up the motor at nominal power, we advise you follow the following tips =

- check if rotation direction is correct.
- avoid setting the motor at lower rpm than the minimum allowed (500 Rpm) and avoid overload start ups if oil is at a low temperature.

Periodically check the wear of the grooved pipe (S) joining the motor and the transmission shaft by removing the screws (E) on the engine flange. Replace in case the pipe's internal grooves are worn out.

Spread grease in the pipe before replacing it.



End of use/Storage

Wash the frame with a water jet, especially the internal parts in order to remove any Salt residues. Dry and perform a complete lubrication cycle. After having completed all cleansing operations, disconnect the snow turbine from the operating machine taking care to disconnect all flexible hydraulic pipes from the quick-release joints of the auxiliary line. The equipment must be stored in a secure location, inaccessible to children and animals, protected with a suitable cover in order to avoid contact with rotary devices and their accidental rotation.

Scrapping and disposal

The equipment's scrapping operations must be performed by operators who are experts in the sector and in compliance with all standing regulations pertaining the issue:

-do not release non-biodegradable products, oils and non-ferrous components (plastic, rubber, etc) into the environment.

During scrapping, select all components based on their chemical and composition characteristics and carry out recycling.

Caution !



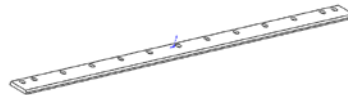
Do not release exhausted oils or residual lubricants into the environment.

Exhausted oils must be collected and transported to the Exhausted Oils Consortium by Authorised bodies.

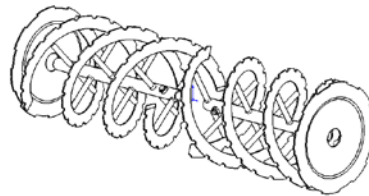
Parts subject to wear and tear

List of parts normally subject to wear and tear

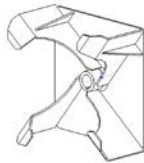
- 1- Lower blade
code TN0020-04-05



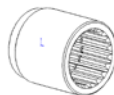
- 2- Frontal half worms
code TN2400-08-010 SX
TN2400-08-020 DX



- 3- Rotor d.400 six
code TN8001-01-006



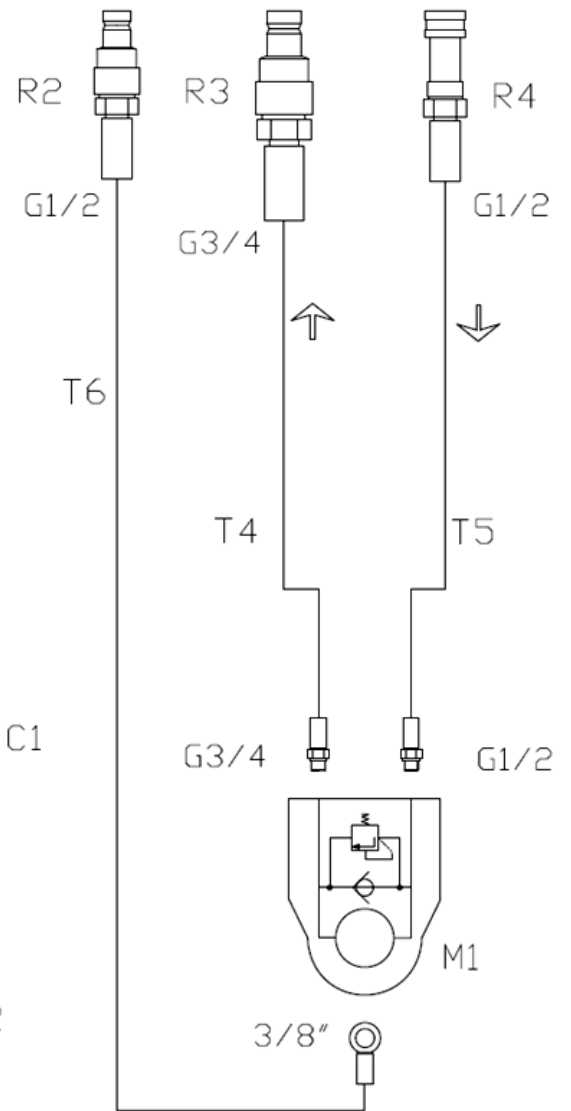
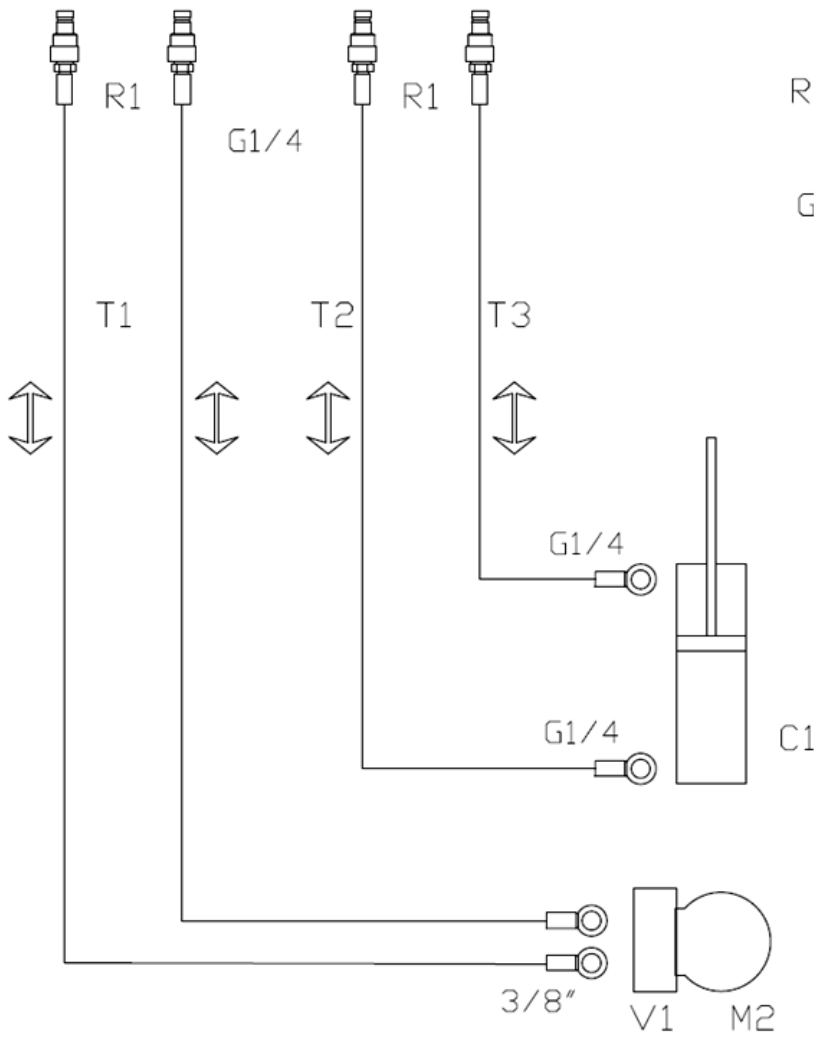
- 4- Ribbed sleeve
code TN9002-02-02



Hydraulic system

chute

turbine



General terms of warranty

The manufacturer guarantees its products for 12/24 months from the date of delivery. Parts characterised by faults in materials, mechanical and productions processes will be replaced free of charge by the manufacturer through its sales and technical servicing network.

The fault found must be reported to **CERRUTI** and, should the circumstances require, be appropriately documented with a written technical report and/or photographic material. The faulty part must be returned to **CERRUTI** who, after inspecting it and verifying that the warranty is applicable, will repair or replace it, taking the necessary time to do so, without charging for either material or labour.

The cost of transport of the parts covered by warranty shall be borne by the customer, who may organise it personally or authorise **CERRUTI** to take care of transport and charge all expenses to the customer.

The warranty shall be voided in the following cases:

- Obvious absence of maintenance
 - Improper use of equipment or interference
 - Use of non-original spare parts or unsuitable lubricants
 - Operations carried out by unauthorised personnel
- The manufacturer excludes consumable materials and parts subject to normal wear and tear from the warranty.
- Any damages caused during transport must be reported immediately to the transporter; otherwise the warranty shall be voided.
 - The warranty does not cover direct or indirect damages caused to persons or objects by failure of equipment or due to enforced prolonged suspension of its use.
 - When applying for repairs under warranty, please indicate:
 - 1-serial and model number of the equipment
 - 2-registration number
 - 3-date of purchase
 - 4-dealer name



CERRUTI srl

Via Statale 27/H – 14033 Castell'Alfero (AT)

Tel. +39 0141296957 Fax +39 0141276915

info@cerrutimacchineagricole.it

www.cerrutimacchineagricole.it